

News, Opportunities and Deadlines for August 2018

LBRN Steering Committee Meeting

LBRN Steering Committee Meeting

- Friday, Sep. 21st 2018, 1p.m. – 6p.m.
- Center for Computation & Technology, LSU
- Steering committee, Admin core, BBC core, MCBR core and PUI campus representatives
- Conference agenda will be posted soon

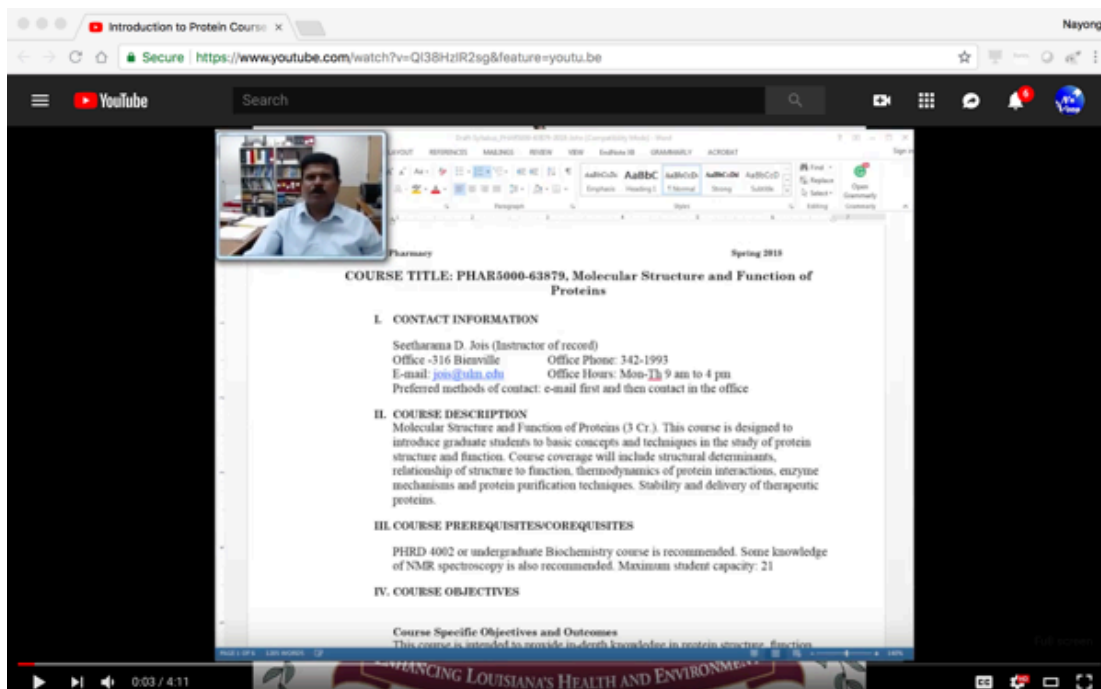


Louisiana Biomedical Research Network

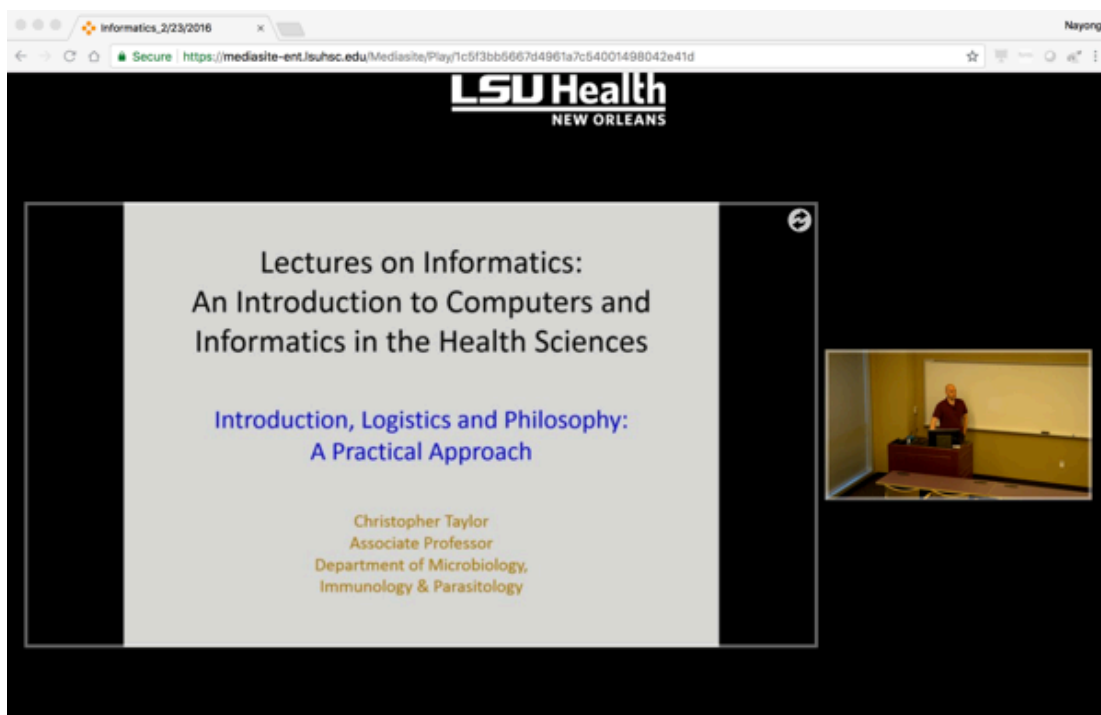
LBRN will held the Steering Committee meeting with each cores and its participants at Sep. 21st at the Center for Computation & Technology, LSU. Please mark it on your calendar.

LBRN Lecture Series

This is a series on Molecular Structure and Function of Proteins. Opt-in to this lecture series can be made by this link: [Protein Course Opt-In](#) and the following are freely accessible without opt-in permissions the [Introduction to Protein Course](#) and the first lecture of the series: [Part 1: Basics of Amino Acids](#) there are 16 parts to the lecture series and the course opt-in form will give Dr. Jois' contact information for anyone more interested in the lecture series.



Please note the already available lecture series by Dr. Chris Taylor on “An Introduction to Computers and Informatics in the Health Sciences” and “An Introduction to Microbial Community Sequencing and Analysis” already available [Lecture Series Site](http://lbrn.lsu.edu/bbc-core.html) from the LBRN BBC Core page: <http://lbrn.lsu.edu/bbc-core.html>



The schedule for the Fall 2018 HPC Training is available at <http://www.hpc.lsu.edu/training/tutorials.php>.

Our first HPC training will be held on Wednesday, August 29 at 9:00 AM in 307 Frey Computing Service Center and broadcast through WebEx for remote users.

Note that all HPC trainings will start at 9:00AM.

Wednesday, August 29, 2018: Introduction to Linux

The aim of this training is to get users familiar with using Linux systems e.g. the HPC resources. This training will cover basic Linux commands and editors (emacs and vi) on Linux systems. Anyone who is interested in learning about using a Linux based computer is encouraged to attend. If you are not familiar with using a Linux system particularly creating/writing files then this course is a prerequisite for the forthcoming training on HPC User Environment 1 and 2.

This training is ***mandatory*** for HPC users who are not familiar with using a Linux/Unix system.

Prerequisite: Access to a Linux/Unix based computer i.e. Linux (VirtualBox images provided at HPC website), Mac OSX and Windows with Cygwin and Bash installed.

Next two HPC Trainings:

Wednesday, September 05, 2018: HPC User Environment 1, Job Management with PBS

Wednesday, September 12, 2018: HPC User Environment 2, Job Management with PBS

This training provides an overview of the HPC/LONI general account and allocation policies, hardware and software environments, queuing system, compiling programs, writing submit scripts, running and monitoring jobs on HPC systems.

This training is a ***mandatory*** two day training event for all HPC/LONI new users held on September 05 and September 12.

Prerequisite: Familiarity with Linux/Unix commands and editors

Please visit <http://www.hpc.lsu.edu/training/tutorials.php> for more details and register using the link provided.

Users who plan on joining remotely will be provided with a WebEx Link in their registration confirmation email.

Please see the system requirements at <https://grok.lsu.edu/Categories.aspx?parentCategoryId=3381>.

**NIH : Academic Research Enhancement Award
for Undergraduate-Focused Institutions (R15 - Clinical Trial Not
Allowed)**

A new **NIGMS R15 AREA program FOA** ([PAR-18-714](#)) that has been published today. The purpose of this Academic Research Enhancement Award (AREA) for Undergraduate-Focused Institutions is to support small scale research grants at institutions that do not receive substantial funding from the NIH, with an emphasis on providing biomedical research experiences primarily for undergraduate students, and enhancing the research environment at these applicant institutions. Eligible institutions must award baccalaureate science degrees, and have received less than 6 million dollars per year of NIH support (total costs) in 4 of the last 7 fiscal years. **This AREA FOA emphasizes the engagement and inclusion of undergraduates in research.**

See the details of this FOA at: [https://grants.nih.gov/grants/guide/pa-files/PA-18-714.html](https://grants.nih.gov/grants/guide/pa-files/PA-18-504.html)

Please note the following changes in NIGMS Support of Academic Research Enhancement Award (R15) Grants as published in the Notice ([PAR-18-714](#)):

1. NIGMS will no longer accept New, Renewal, Resubmission or Revision applications for R15 grants under the NIH Parent R15 Funding Opportunity Announcement (FOA) ([PA-18-504](#) and subsequent reissuances).
2. All R15 applications for NIGMS support must be submitted to [PAR-18-714](#) "Academic Research Enhancement Award for Undergraduate-Focused Institutions".

The first AIDS Application due date for this FOA is September 7, 2018

[More details...](#)

BBC Core Educational Resource



The BBC Core provides introductory educational lecture series on informatics topics that are recorded and streamed. Prior offerings that are available for on demand streaming include;

- An Introduction to Computers and Informatics in the Health Sciences

<http://metagenomics.lsuhsu.edu/lectures/introinformatics/>

- An Introduction to Microbial Community Sequencing and Analysis

<http://metagenomics.lsuhsu.edu/lectures/intromicrobiota/>

On demand streaming links are available by each lecture along with downloadable lecture slides.

LONI HPC Allocation for LBRN



We are happy to announce that High Performance Computing allocation for supporting LBRN/BBC Core community from the LONI HPC system.

This can be utilized in lieu of individual investigators having to apply for and acquire their own allocations to access the HPC resources. If any of your campus members need access to high performance computing, please have them interface with [Dr. Nayong Kim](#).

CFA for Short Term Core Projects



Molecular Cell Biology Research Resources Core (**MCBRC**) and Bioinformatics, Biostatistics, and Computational Biology Core (**BBCC**) are calling for proposals to carry out short term projects in collaboration with the Cores. All LBRN researchers can submit a proposal for a defined project that can be carried out in collaboration with the Core facilities listed in the attached Call for Proposals (CFP) on a competitive basis. Each selected project will be allocated \$1,500 to fully or partially offset Core expenses. More details can be found in the

attached CFP.

[More details can be found in the attached CFP.](#)

NIH Extramural Nexus (NIH/OD)



• Trends in Diversity within the NIH-funded Workforce

As highlighted in many previous [blog posts](#) and the recent National Academies of Sciences, Engineering, and Medicine (NASEM) [report](#), promoting a strong biomedical workforce is a top priority for the NIH. In 2017, NIH launched the [Next Generation Researchers Initiative](#), which is a multi-pronged approach to increase the number of NIH-funded early stage investigators. An important component of this initiative is the call for increased transparency and availability of data about the make-up of the biomedical research workforce. More complete data will allow NIH leadership to best understand and address the needs of our emerging workforce.

[...Continue reading](#)

• RCDeCade: A Case Study to Show NIH Support Trends in an Emerging Scientific Field

A few weeks ago, we [touted the value of the NIH's Research, Condition, and Disease Classification \(RCDC\) system](#) to give us consistent annual reporting on official research budget categories and the ability to see trends in spending over time. RCDC's [robust scientific validation process](#), which allows for such consistency, provides public transparency into over 280 different NIH budget categories.

[RCDC categories](#) do not encompass all types of biomedical research. So, how can we get this type of data for other research areas that are not encompassed in RCDC categories, especially those which are newly emerging fields? Are we able to use the same thesaurus-based classification system to explore other research trends?

[...Continue reading](#)

Top Stories

• OHRP Announces Availability of Three Draft Guidance Documents Related to Revised Common Rule

As you may recall, NIH issued guidance for implementing the burden-reducing provisions of the 2018 Common Rule ([NOT-OD-18-211](#)). Subsequently on July 20, 2018, the HHS Office for Human Research Protections (OHRP) has announced the availability of three draft guidance documents that relate to three burden-reducing provisions in the revised Common Rule that institutions may choose to implement during the delay period (July 19, 2018 through January 20, 2019):

[... Continue reading](#)

• NIH Application Resubmission Policy

NIH's resubmission policy has not changed, but the [policy notice](#) highlights some important points:

- Only a single resubmission ([A1](#)) of an original application ([A0](#)) will be accepted
- An A0 application may be submitted following an unsuccessful A0 or A1 application, with a few exceptions
- What happens when switching FOAs between the A0 and A1 applications
- Generally a change of [activity code](#) (e.g., R01) between the A0 and A1 is not allowed, with one exception

Read the [policy](#) for details.

New Resources

• Looking for the Latest Definition for Terms Relating to Human Subjects and Clinical Trials?

The Glossary of NIH terms now contains definitions for Ancillary Study, Child, Clinical Trial Research Experience, Independent Clinical Trial, and Older Adult.

Ancillary Study is an adjunctive or supplemental study to an ongoing study. An ancillary study may or may not be a clinical trial. Determine whether an ancillary study is a clinical trial by answering the [four questions that define NIH clinical trials](#) based on the information about the ancillary study alone, regardless of the clinical trial status of the parent trial. An ancillary clinical trial is a trial for which the answer to the four questions is 'Yes'.

[... Continue reading](#)

• New “All About Grants” Podcast on NIH’s Inclusion Across the Lifespan Policy

Starting January 29, 2019, NIH will begin implementing the Inclusion Across the Lifespan policy, which requires the consideration of age, along with sex/gender and race/ethnicity, in applications that involve human participants. What does this policy mean for you and your study?

Dawn Corbett, NIH’s Inclusion Policy Officer, answers these questions and more in another installment of the “All About Grants” podcast. Listen in for advice on designing your study to comply with the Inclusion Across the Lifespan policy ([MP3](#) / [Transcript](#)).

More podcasts are available on our [All About Grants](#) podcast page.

• A Look at the Human Subjects System

The Human Subjects System (HSS) system was launched in June 2018 and replaced the Inclusion Management System (IMS). Learn about HSS at a glance by viewing the new graphic on the new [Human Subjects System webpage](#). The graphic orients users at different stages of the grants process to how and when they can use HSS to update study information. You can also find resources such as links to training, videos, and FAQs to better understand HSS.

You Ask, We Answer

• Are Studies Ancillary to Clinical Trials Considered to be Clinical Trials As Well?

It depends.

Yes; if the ancillary study adds an additional prospectively assigned intervention to patients or a sub-population of patients within the larger clinical trial and all elements of the NIH clinical trial definition are met.

No; if the ancillary study is only adding additional measures to an existing clinical trial.

Determine whether an ancillary study is a clinical trial by answering the [four questions that define NIH clinical trials](#) based on the information about the ancillary study alone, regardless of the clinical trial status of the parent trial.

Have more questions about clinical trial definitions? We have more [FAQs](#) that can help.

• How Do You Define a “Study” for the Purposes of Providing Information on the PHS Human Subject and Clinical Trial Form?

We recognize that it may be difficult to determine whether two or more closely related protocols should be considered a single study. Generally, if you have research activities that use the same human subjects population, follow the same core research protocol and procedures, and intend to combine the data for analysis in aggregate, this would be considered a single study for the purposes of the PHS Human Subjects and Clinical Trial form.

[... Continue reading](#)

• You Had Clinical Trial K Application Questions, We Have Answers

Are you submitting a K application? Check out some new frequently asked questions (FAQs).

When submitting a K99/R00 application which involves human subjects, do I need to complete a study record in the PHS Human Subjects and Clinical Trials Information form for each phase?

The K99/R00 is a single application for both phases of the award, and the reviewers evaluate both phases. The research plan for the R00 phase of the award should be described in sufficient detail for reviewers to evaluate the merit of this phase of the application. A single study record covering both phases is typically sufficient. You can point out any minor differences between K99 and R00 within the study attachments. At the time of the K99 application submission, inclusion enrollment data should be provided for the K99 phase only.

[... Continue reading](#)

National Research Mentoring Network



NRMN @ ABRCMS 2018- Travel Award Programs; Apply Today!



[ABRCMS](#) is one of the nation's largest STEM conferences for underrepresented minority students. Over the four days, more than 2,000 students present their research, explore over 380 exhibit booths, participate in cutting edge scientific sessions and network with faculty and peers from across the nation.

Research faculty provide the students with valuable feedback by serving as presentation judges and play an essential role in mentoring students and learning strategies for facilitating student success.

The [Annual Biomedical Research Conference for Minority Students](#) (ABRCMS) is inviting applications for two travel award programs.

- Research faculty and mentors willing to serve as judges at ABRCMS 2018 are eligible to apply for the [ABRCMS Judge Travel Award](#). Apply by **July 20th**
- Undergraduates, postbaccalaureates, and terminal level master's students are invited to showcase their research by [submitting abstracts](#) for presentation. The abstract submission deadline is **September 7th**
- Travel funds are available to eligible undergraduates and postbaccalaureates students who submit an abstract for poster or oral presentation. The deadline to [apply for a travel award](#) is **August 22nd**

Questions? Contact abrcms@asmusa.org.

NIH Acknowledgement

So that we can most effectively communicate the scope and results of our funding support, we would like to know when you are planning news announcements about IDeA awards or program activities and achievements...

When you produce such material, please be sure to identify the IDeA program, not just the INBRE, COBRE or sub-program, and to provide context about the program's goals along the lines of:

The University of _____ has received \$XXX from the National Institutes of Health (NIH) to support an Institutional Development Award (IDeA) Center of Biomedical Research Excellence. The IDeA program builds research capacities in states that historically have

had low levels of NIH funding by supporting basic, clinical and translational research; faculty development; and infrastructure improvements.

In journal articles, news releases, or other materials about your program's activities or achievements, please use funding acknowledgement language such as:

Research reported in this {publication, release} was supported by an Institutional Development Award (IDeA) from the National Institute of General Medical Sciences of the National Institutes of Health under grant number 5 P20 GM103424-15 and 3 P20 GM103424-15S1.



Copyright © LBRN

Want to change how you receive these emails?
You can [update your preferences](#) or [unsubscribe from this list](#).

This email was sent to <<Email Address>>
[why did I get this?](#) [unsubscribe from this list](#) [update subscription preferences](#)
LSU · Louisiana State University · 2017 Digital Media Center · Baton Rouge, La 70803 · USA



mailchimp